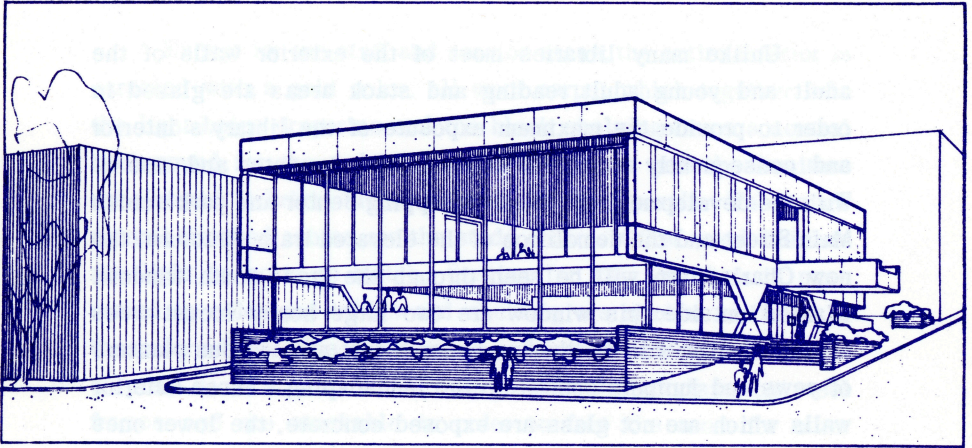


**BOSTON PUBLIC LIBRARY**



**CHARLESTOWN BRANCH LIBRARY**  
**179 MAIN STREET**  
**CHARLESTOWN, MASSACHUSETTS**  
**TELEPHONE 242-1248**

Architecturally the Charlestown Branch Library is a simple formal expression of a single function enclosed under a great hovering roof. This roof and the mezzanine floor are framed with pre-cast pre-stressed concrete members spanning the entire width of the building, fifty-seven feet. They are supported by concrete bearing walls each of which rests on two steel pins so that the entire structure of the building is poised on four points.

Unlike many libraries most of the exterior walls of the adult and young adult reading and stack areas are glazed in order to provide the maximum exposure of the library's interior and consequently to attract the passerby to enter and use it. With the development of the new shopping center and park across Main Street and the demolition of the elevated train structure, the new Charlestown will be seen through the great south window. Planted outside this window are two large honey locust trees which together with another on Green Street and various planters of yews and junipers constitute the landscaping. Those exterior walls which are not glass are exposed concrete, the lower ones being sandblasted.

Access to the building is under shelter of a marquee directly from the Green Street sidewalk level. Since this street slopes up from Main Street the result is that the main floor is elevated above the pedestrian and vehicular traffic on Main Street. Inside, the library is essentially one large open space for all three age groups with the children being somewhat isolated on a mezzanine overlooking the adult and young adult reading areas. Adjacent to the children's area is a multi-purpose room capable of seating 120 persons for lectures, films, etc., or smaller groups for other activities. Service functions such as work rooms, staff rooms, rest rooms, storage and mechanical rooms are organized on the ground floor below the multi-purpose room.

Charlestown Branch Library

Dedication

Friday, March 13, 1970

4:00 p.m.

Welcome

Philip J. McNiff, Director,  
and Librarian of the  
Boston Public Library

Presentation of Keys

Eduardo Catalano, A.I.A.

Acceptance of Keys  
on behalf of  
the Trustees

Erwin D. Canham, President  
of the Board of Trustees  
of the Boston Public Library

Invitation to Open House

Mrs. Bridie Stotz  
Charlestown Branch Library

Open House

4:00 p.m. to 6:00 p.m.



The lighting is primarily fluorescent integrated with the structural members and supplemented by incandescent accent lighting at such points as the charge desk and the speakers stand. The building is completely air-conditioned and heated with a gas-fired forced air system most of the equipment of which is located on the roof and controlled by thermostats distributed around the building for zone control.

Except for the staff and service areas, the entire interior is carpeted with a gold color, all wool carpet which together with the light beige draperies and the black shelving forms a neutral background for the multi-colored book covers and the furniture upholstered in bright blues, magenta, red and purple. Tables are natural finished ash as are the study chairs. Other wood finishes are light in color to match. Seating for fifty children is more varied in color and tables and shelving are similar in finish to those for adults. The one-hundred and twenty chairs in the multi-purpose room are black and white molded fiberglass on steel frames and are stackable in order to free the room for other activities. The building will shelve some 25,000 books.

The total area of the building is 9,016 square feet, 20% of which is used for staff and service facilities. It was built for a total of \$346,696.12 (including landscaping, carpet and shelving, but excluding all other furnishings) by Alfred Johnson & Son, Inc. General Contractor.

Eduardo Catalano was the Architect; Frederick Taylor, Associate Architect; Paul Weidinger, Structural Engineer; and Francis Associates, Mechanical and Electrical Engineers.



## TRUSTEES

Erwin D. Canham President

Sidney R. Rabb Vice President

Edward G. Murray Chairman, Committee on Buildings

Lenahan O'Connell

Augustin H. Parker

Philip J. McNiff, Director, and Librarian

Bridie Stotz, Branch Librarian  
Charlestown Branch Library

## Hours of Service

Monday	1 p.m. to 9 p.m.	Thursday	1 p.m. to 9 p.m.
Tuesday	9 a.m. to 6 p.m.	Friday	9 a.m. to 5 p.m.
Wednesday	9 a.m. to 6 p.m.	Saturday	9 a.m. to 1 p.m.